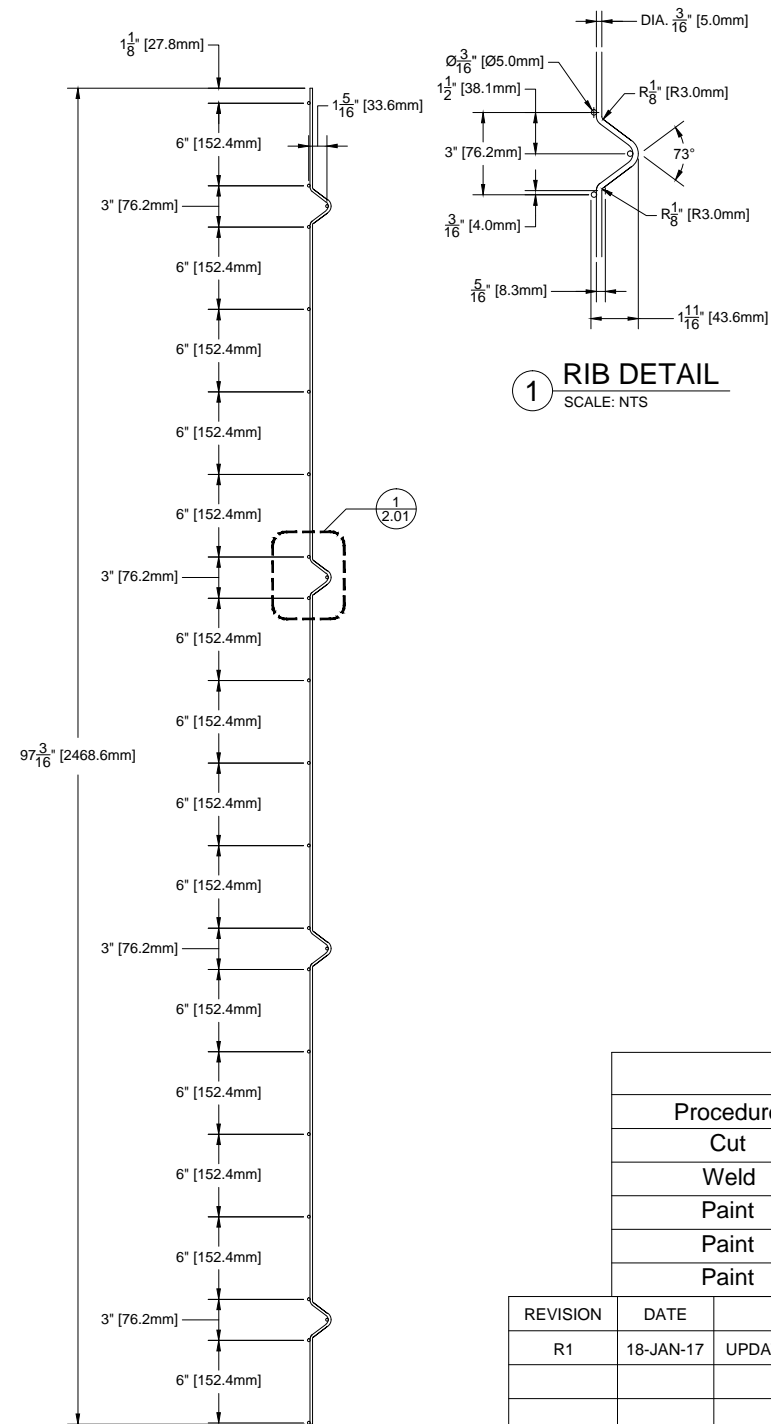


3 8'W x 8'H PRISM PANEL ELEVATION-AFTER BENDING
SCALE: NTS



2 8'W x 8'H PRISM PANEL SECTION
SCALE: NTS

1 RIB DETAIL
SCALE: NTS

SAP Part Numbers		
Procedure	Color	SAP Number
Cut	-	-
Weld	N/A	4028646
Paint	BLACK	7066827
Paint	GARRET GRAY	7066828
Paint	HDG	4035106

REVISION	DATE	DESCRIPTION	BY	APPROVED
R1	18-JAN-17	UPDATE WIRE TO 6.5GA	NLI	

TITLE: PRISM,PANEL 2x6 8'Wx8'H - AFTER BEND

MATERIAL:
6.5ga ZINCALU WIRE
FINISH:

TOLERANCES
FRACTIONS ±1/16
.XX ±.030
.XXX ±.015
ANGLE ±.5°

UNLESS OTHERWISE SPECIFIED
DIMENSIONS ARE IN INCHES

**BETA FENCE
USA**

Main: 972-878-7000 Fax: 214-887-4552
3309 S. I-45 ENNIS, TX 75119
www.BetafenceUSA.com

SCALE: NTS
DRAWN: BWE
CHECKED: DT
APPROVED:
DATE: 20-JULY-15
PART NUMBER:
See Chart
DRAWING NUMBER:
PRM30P101099

NOTICE: BETA FENCE USA CLAIMS PROPRIETARY RIGHTS TO ALL INFORMATION AND/OR TECHNICAL DATA CONTAINED ON THIS DRAWING WHICH IS TO BE MAINTAINED BY YOU IN STRICT CONFIDENCE. THIS DRAWING IS NOT TO BE DISCLOSED OR REPRODUCED, IN WHOLE OR IN PART, DIRECTLY OR INDIRECTLY, IN ANY MANNER WHATSOEVER, WITHOUT THE EXPRESS WRITTEN CONSENT OF BETA FENCE USA, AND IT SHALL BE RETURNED UPON REQUEST.